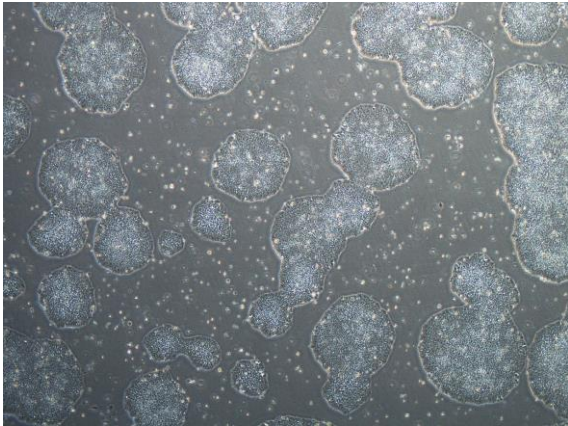
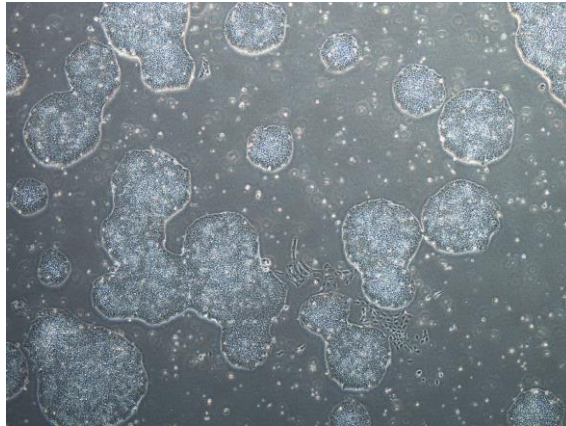


【 CiRA-j-1438 】 Morphology of iPSC colonies

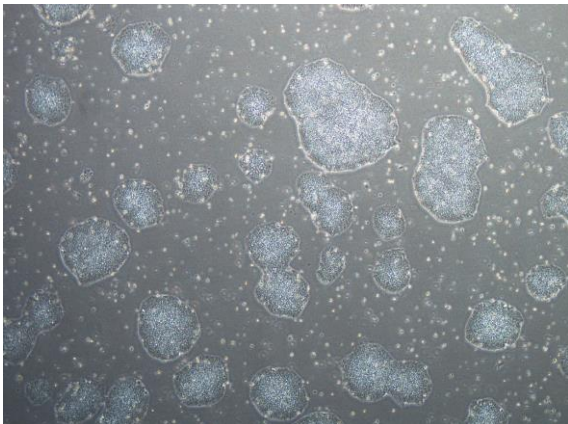
CiRA-j-1438-A: passage-3



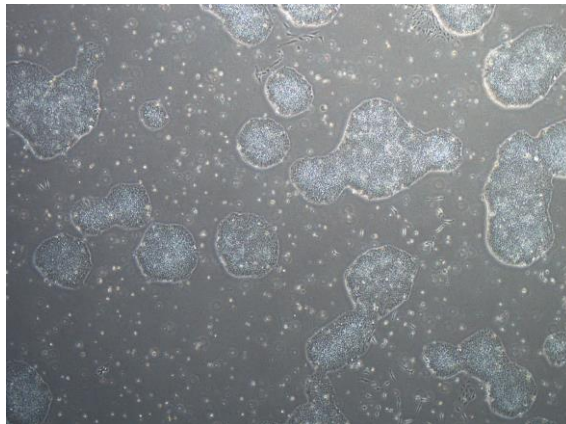
CiRA-j-1438-B: passage-3



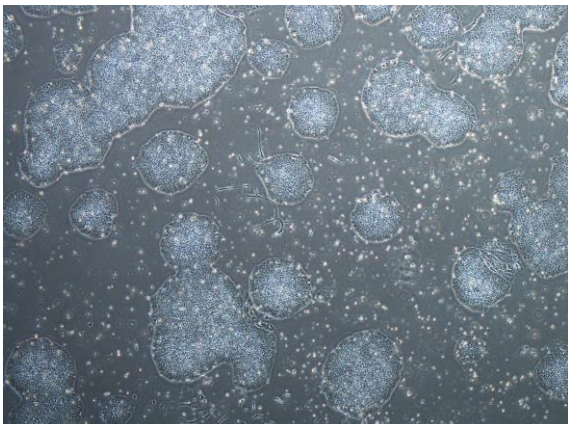
CiRA-j-1438-C: passage-3



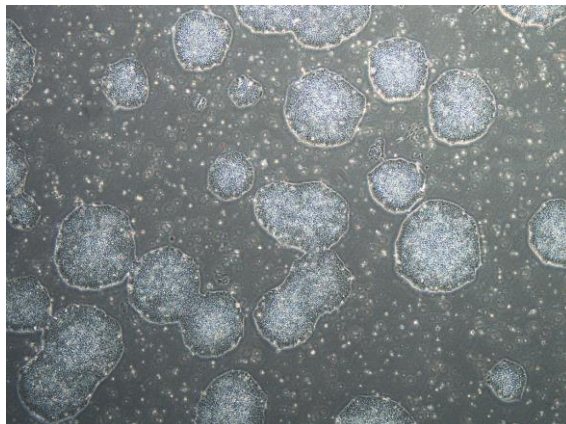
CiRA-j-1438-D: passage-3



CiRA-j-1438-E: passage-3



CiRA-j-1438-F: passage-3



(All images were captured at 4x magnification)